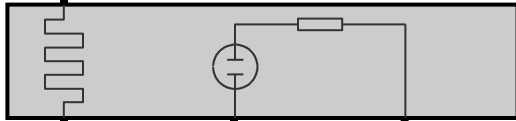


4 X8680

U_HR<2
0.5

RT/WS

1 X62101



2 4 3 X62101

T_LHV1

0.5
GN

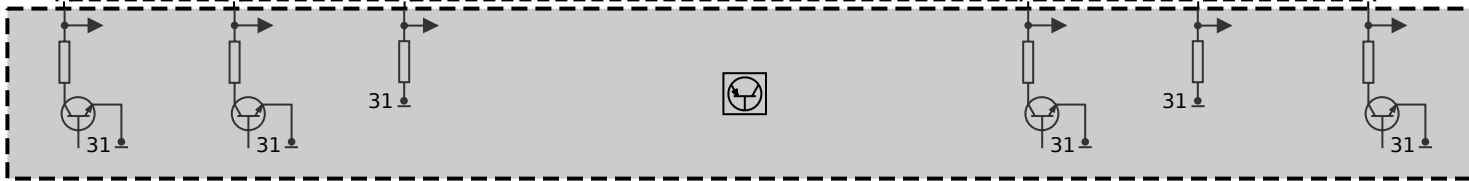
A_LSVR1

0.5
GE

M_LSV1

0.5
SW

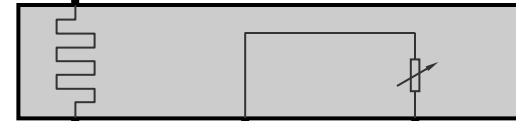
1 20 7 X60002



U_HR<2
0.5

RT/WS

1 X62102



2 3 4 X62102

T_LHH1

0.5
GN

M_LSH1

0.5
SW

A_LSH1

0.5
GE

6 10 16 X60002

