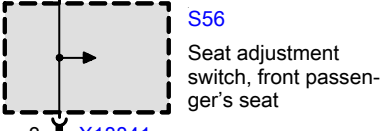
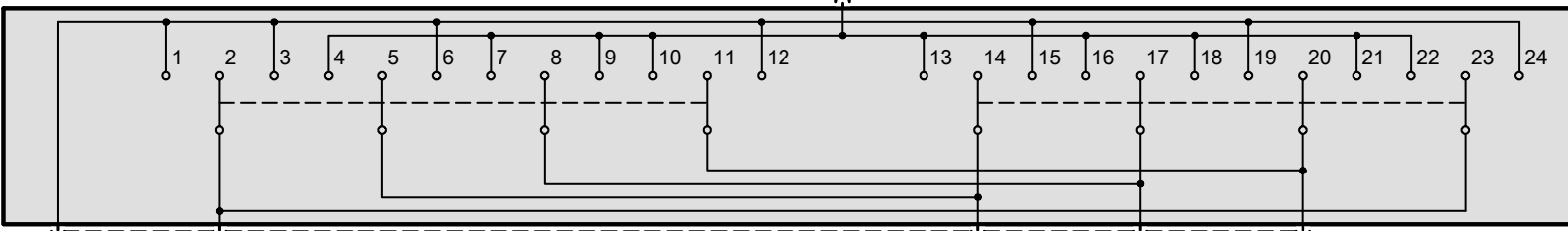


33 X10015  
13 X279

30<70  
2.5  
RT/BR  
8 X604



3 X18841  
30<70  
0.5  
RT/BR  
4 X659



2  
31L<6  
0.5  
BR

3  
LOBFM--  
0.5  
VI/WS

X1501  
LOBFPP  
0.5  
VI/GR



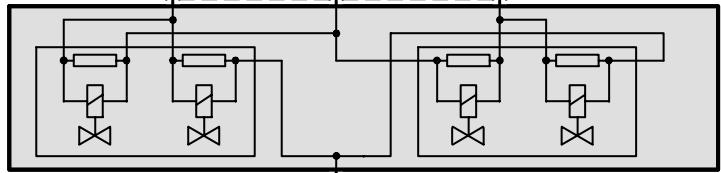
X18138

1  
OKBF  
0.5  
BL/RT

5  
LOBFPP  
0.5  
VI/GR

6  
UKBF  
0.5  
SW/VI

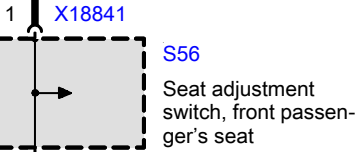
X659



X1502  
31L<6  
0.5  
BR

X18749

X18749



6 X604  
31L<7  
2.5  
BR

14 X279  
X490