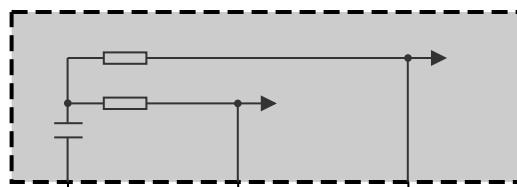


Z44
Front right power distribution
box



R6
CAN terminator 6

30B<51
2.5
RT/SW

31
0.5
BR/SW

PT_CAN2H
0.35
WS/GN

PT_CAN2L
0.35
WS/BL

Z10*47B

R6*1B

10

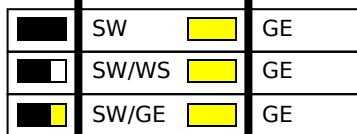
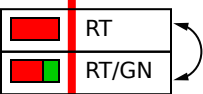
3

X13*1B

30B<51
2.5

PT_CAN2H
0.35

PT_CAN2L
0.35

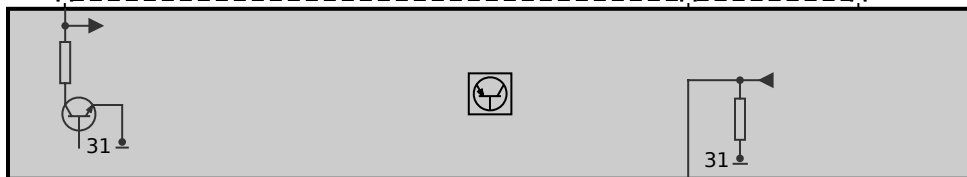


B58 engine
B46/B48 engine
Diesel

13

5

Y21*1B



Y21
Electronic transmission control

14 Y21*1B

31
2.5
BR

Z50*1B Diesel
Z6000*1B B46/B48/B58 engine