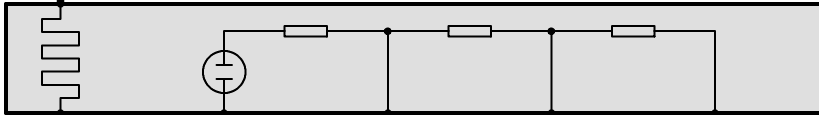


4 X8582



U<sub>HR</sub><2  
0.75  
RT

4 X62101



3

T\_LHV1  
0.5  
BR

1

A\_LSVP1  
0.5  
SW

5

I\_LSVP1  
0.5  
GE

2

M\_LSV1  
0.5  
BL

6

A\_LSVR1  
0.5  
WS

X62101

16

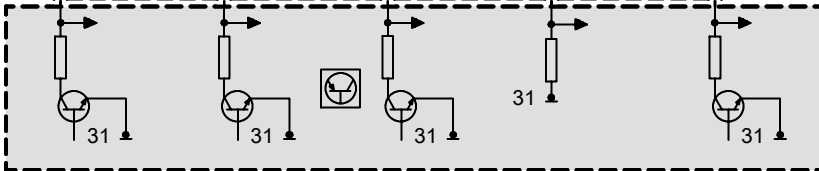
36

60

12

84

X2411



31

31

31

31

31