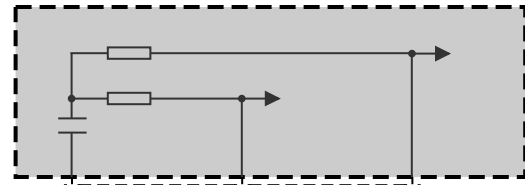
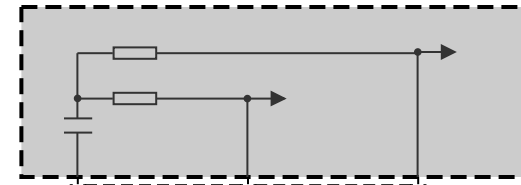
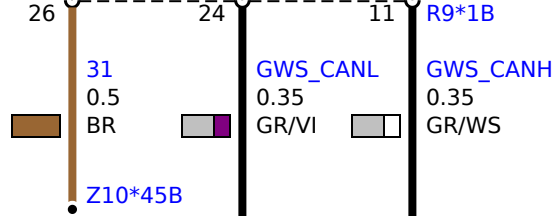


Z44
Front right power distribution
box

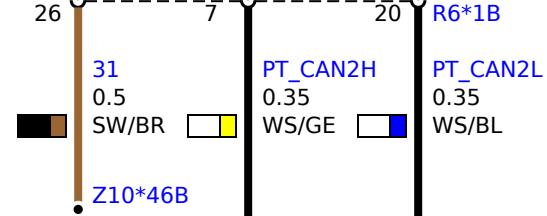
up to 2017_06



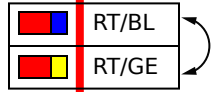
R9
CAN terminator 9



R6
CAN terminator 6



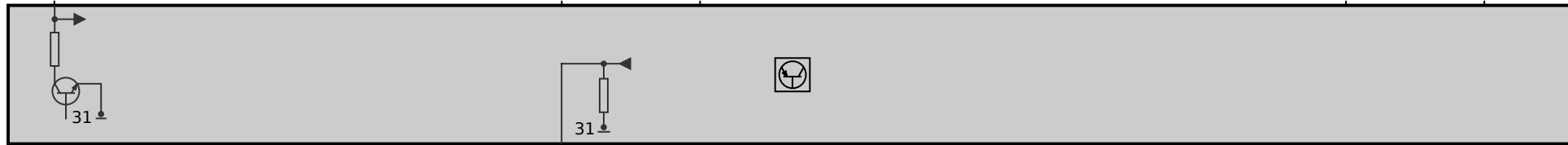
30B<49
1.5



10

30B<49
2.5
RT

13



GWS_CANL 0.35 GE GWS_CANH 0.35 SW/BL

PT_CAN2H 0.35 SW/GE PT_CAN2L 0.35 GE

6

5

3

4 X13*1B

3

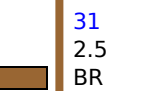
4

5

6 Y21*1B

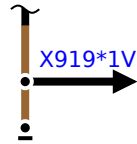
Y21
Electronic transmission control

14 Y21*1B

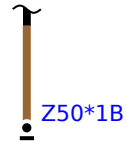


technical update 0

technical update 1



X919*1V



Z50*1B