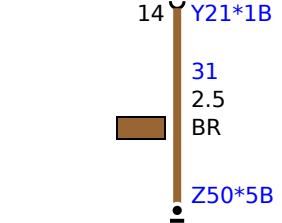
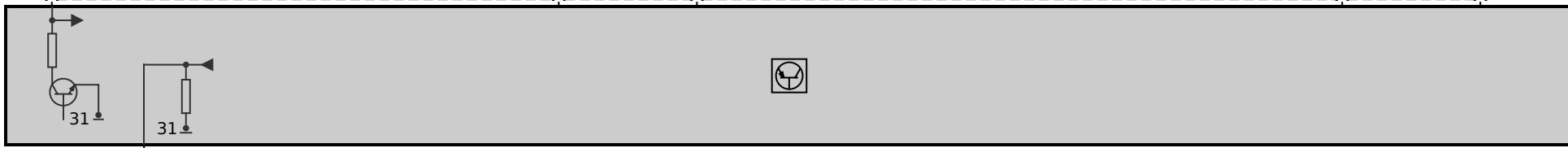
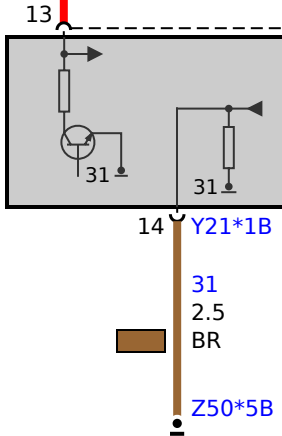
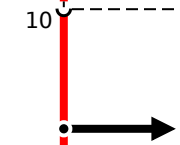
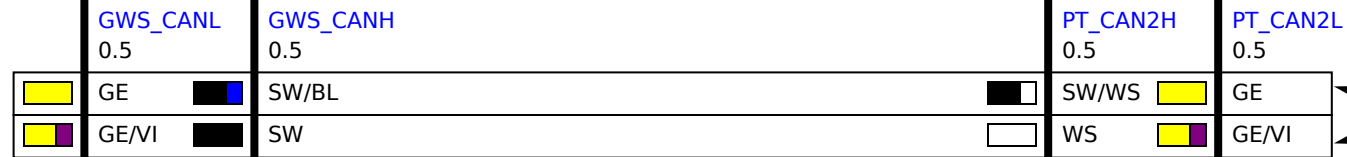
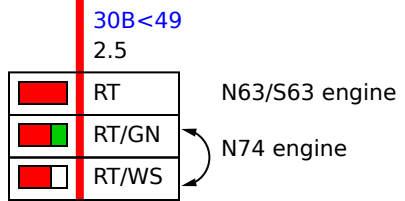
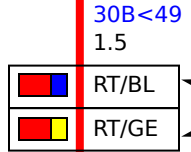
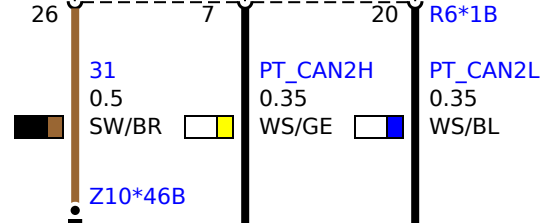
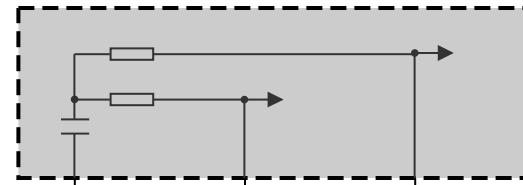
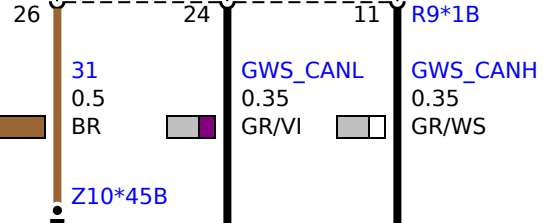
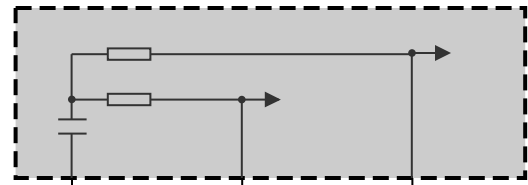


**F49**  
20A

up to 2017\_06



10

13

26

31

0.5

BR

GWS\_CANL

0.35

GR/VI

GWS\_CANH

0.35

GR/WS

Z10\*45B

26

31

0.5

SW/BR

PT\_CAN2H

0.35

WS/GE

PT\_CAN2L

0.35

WS/BL

Z10\*46B

6

GWS\_CANL

0.5

GE

SW/BL

GWS\_CANH

0.5

SW

PT\_CAN2H

0.5

SW/WS

GE

PT\_CAN2L

0.5

WS

GE/VI

X13\*1B

3

GWS\_CANL

0.5

GE

SW/BL

GWS\_CANH

0.5

SW

PT\_CAN2H

0.5

SW/WS

GE

PT\_CAN2L

0.5

WS

GE/VI

Y21\*1B

14

31

2.5

BR

Z50\*5B