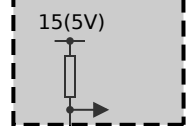


A460
Digital diesel electronics



29 A463*3B

U_5V_2
0.35
BL



3 B268*1B



B268
Engine-oil pressure sensor

1

2 B268*1B

M_OLD
0.35
SW

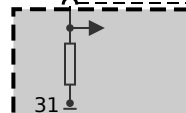


P_OLD
0.5
GE

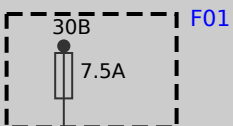


39

34 A463*3B



Z11
Integrated supply module



30B
7.5A
F01

1

30B<01
0.5
RT/GN



1 B316*1B



B6120
Oil-level sensor

2

3 B316*1B

M_OLN
0.35
SW

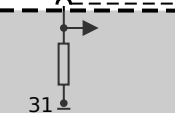


P_OLN
0.35
GE



41

46 A463*3B



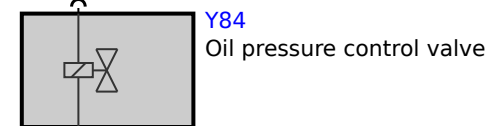
Z11
Integrated supply module

2 Z11*2B

30B<01
0.5
RT/GN



1 Y84*1B



Y84
Oil pressure control valve

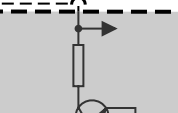
2

2 Y84*1B

T_OLP
0.5
WS/GN



22 A463*2B



A460
Digital diesel electronics