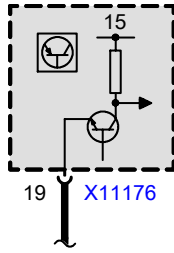


**A63**  
Integrated electronic control unit (IKE)



**A2**  
Instrument cluster

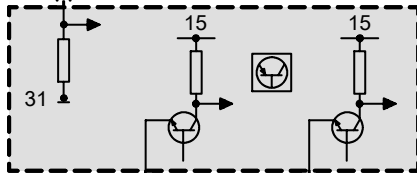
with IKE

without IKE

X1101

DFAHL  
0.35  
BR/RT

23 X253



**A1**  
General module

9

11

X254

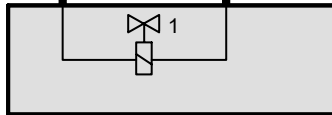
SERV1  
0.5  
SW/WS

SERV2  
0.5  
SW/RT

1

2

X120



**B15**  
Electrohydraulic converter of servotronic  
1) Solenoid valve