

2 X16818

30<47
4.0
RT/BL

1



4 X2086

31
4.0
BR

X165



17 X20001

S_KSH
0.5
WS/GR

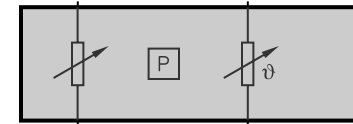
3

X2086

E2000
Fuel heater

47
U_5V_1
0.5
BL/SW

3



2

A_PKs
0.5
GE/GN

48

A_TKS
0.5
GE/RT

4

B2446a
Fuel pressure/temperature sensor

1

M_TKS
0.5
BR/RT

46

X20008

