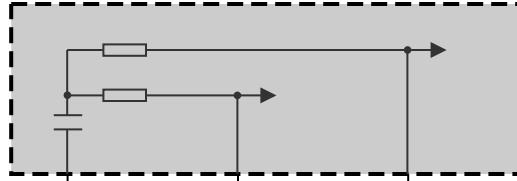


**Z44**  
Front right power distribution box



**R6**  
CAN terminator 6

**30B<51**  
2.5  
RT

**31**  
0.5  
BR/SW  
**Z10\*47B**

**PT\_CAN2H**  
0.35  
WS/GN

**PT\_CAN2L**  
0.35  
WS/BL

10

3

**X13\*1B**



**30B<51**  
2.5

**PT\_CAN2H**  
0.35

**PT\_CAN2L**  
0.35

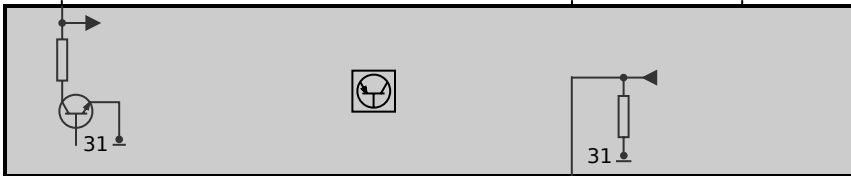
	RT		SW		GE	B58 engine
	RT/GN		SW/WS		GE	B46/B48 engine

B58 engine  
B46/B48 engine

13

5

**Y21\*1B**



**Y21**  
Electronic transmission control

**Y21\*1B**

**31**  
2.5  
BR

**Z6000\*1B**