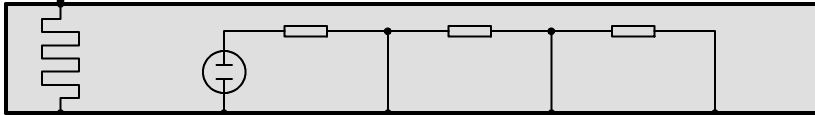


4 X8582



U\_HR<2  
0.75  
RT/GE

4 X62101



3

1

5

2

6

X62101

T\_LHV1  
0.5  
BR/GE

A\_LSVP1  
0.5  
SW/GE

I\_LSVP1  
0.5  
GE/BR

M\_LSV1  
0.5  
BL/GE

A\_LSVR1  
0.5  
WS/VI

16

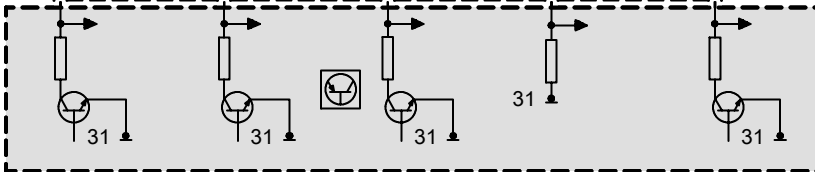
36

60

12

84

X2411



31

31

31

31

31