

8 X8680

U_{HR<4}
0.5
RT/WS

1 X62102

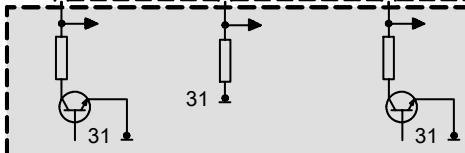


2 T_LHH1
0.5
BR

3 M_LSH1
0.5
SW

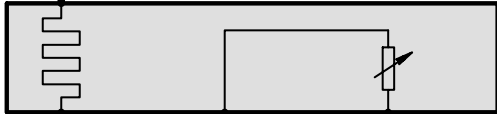
4 A_LSH1
0.5
GE

6 10 16



U_{HR<4}
0.5
RT/WS

1 X62202



2 T_LHH2
0.5
BR

3 M_LSH2
0.5
SW

4 A_LSH2
0.5
GE

12 8 14 X60002

