

11 X2207*1B

50 H_LIN
0.35
BL



U_5V
0.35
BL/RT

M_OLD
0.35
BR

SENT_OLD
0.35
GN/WS

A_TOEL
0.35
BR

M_TOEL
0.35
RT/GN

A_TOEL2
0.35
BR/GN

M_TOEL2
0.35
GE/WS

1

3 M397*1B

3

2

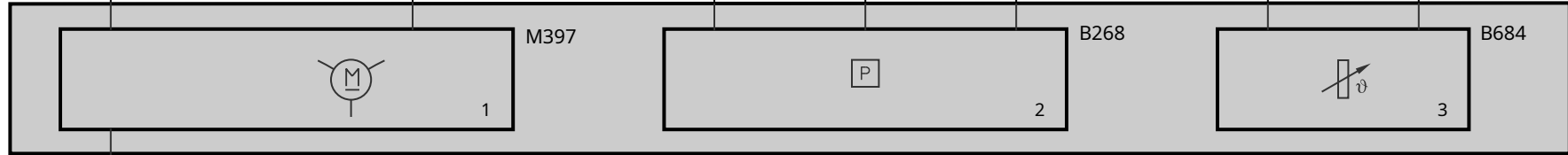
1

1

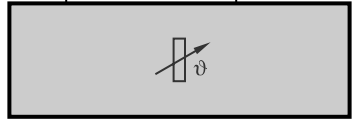
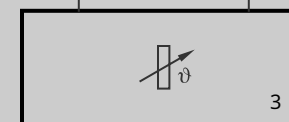
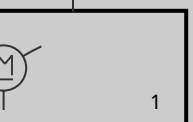
2

1

2



2 M397*1B



B685
Oil temperature sensor 2

X918*1V

